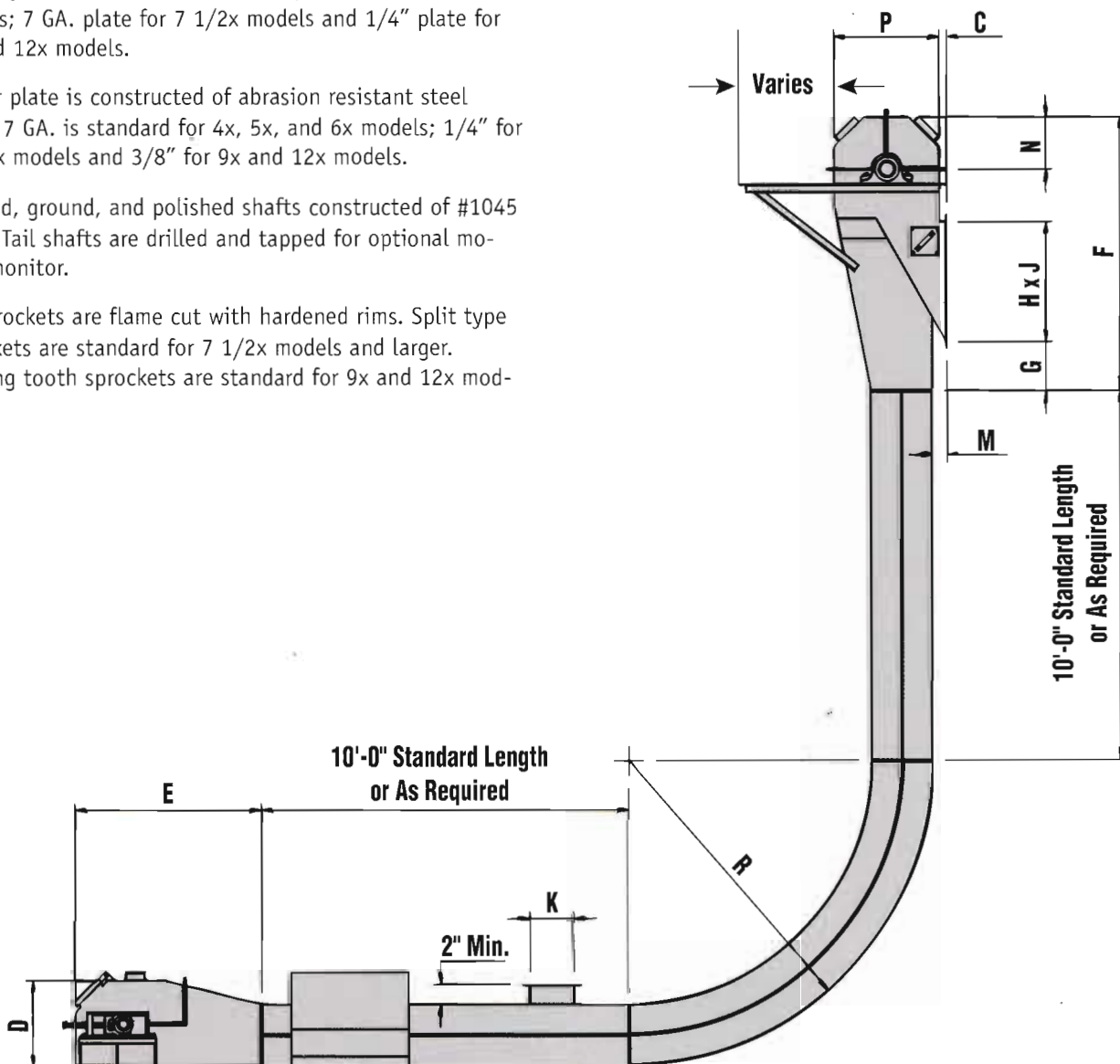




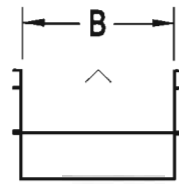
Super Incline Drag Conveyor

Super Incline Features

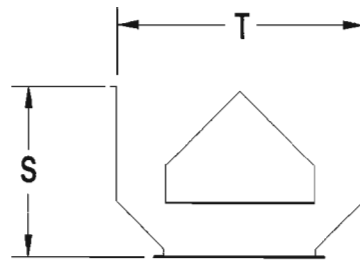
- Head and tail sections have removable covers with lift out shaft assemblies for easy removal and maintenance.
- Head and tail sections have U.H.M.W. shaft seals.
- 7 1/2x and larger models have bolted clean out doors in head section
- Heavy-duty double spherical roller bearings with an L-10 life of 60,000 hours minimum are standard for all models. Tail section has center pull, wide slot take-up with hinged guide designed for easy removal.
- Hinged inspection door in tail section with rubber gasket seal.
- Curved sections are available at any angle. Top, middle, and bottom plates are constructed of bolted abrasion resistant steel. Bolted access doors are standard in all models.
- Housings are constructed of 10 GA. plate for 4x, 5x and 6x models; 7 GA. plate for 7 1/2x models and 1/4" plate for 9x and 12x models.
- Center plate is constructed of abrasion resistant steel plate. 7 GA. is standard for 4x, 5x, and 6x models; 1/4" for 7 1/2x models and 3/8" for 9x and 12x models.
- Turned, ground, and polished shafts constructed of #1045 steel. Tail shafts are drilled and tapped for optional motion monitor.
- All sprockets are flame cut with hardened rims. Split type sprockets are standard for 7 1/2x models and larger. Walking tooth sprockets are standard for 9x and 12x models.
- All steel chain engineered and designed for each specific conveyor for extended life and maximum working loads. Welded style chain is standard for 4x and 5x models. Roller bushed style chain is optional for 6x and 7 1/2x models and standard for 9x and 12x models.
- Flight attachments are constructed of heavy steel plate and welded to the chain. All flights are faced with U.H.M.W. to prevent steel to steel contact. Models 4x and 5x are available with type 1 flights only.
- Type I flights are recommended for most materials through a 30° incline and for free flowing granular material up to 60° incline. Type II flights are recommended for hard to discharge materials and for steeper slopes. Type III flights are recommended for lumpy or abrasive materials.
- Other configurations available, including reverse bend, loop type, and gas tight construction. Head design may differ from that shown depending on slope and material characteristics.



Super Incline Specifications

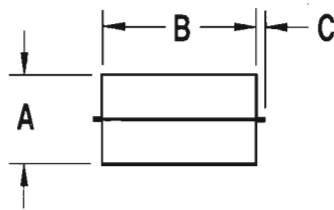


STD. INLET

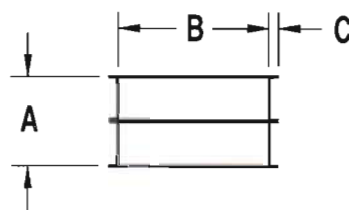


BY-PASS INLET

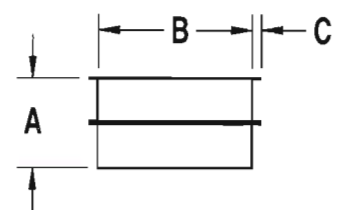
(NOT RECOMMENDED FOR SOME CONVEYOR SIZES AND SOME PRODUCTS)



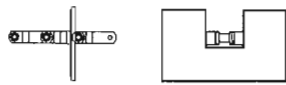
TYPE I TROUGH



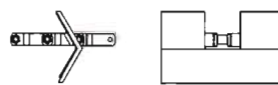
TYPE II TROUGH



TYPE I/II TROUGH



TYPE I FLIGHT



TYPE II FLIGHT



TYPE III FLIGHT

Model	A	B	C	D	E*	F	G	H	J	K	M	N	P	R	S	T
4x5	8 ¹ / ₁₆	5	1 ¹ / ₂	12 ¹ / ₂	30	39 ³ / ₄	3	24	11	8	3	7 ³ / ₄	15 ¹ / ₂	33	12	14
5x7	10 ⁷ / ₁₆	7	1 ¹ / ₂	15 ³ / ₄	34	46 ³ / ₄	6	24	13	10	3	9 ³ / ₄	18 ¹ / ₂	42	15	18
6x9	12 ⁷ / ₁₆	9	1 ¹ / ₂	17 ¹ / ₂	38	55 ³ / ₄	10	26	15	12	3	10 ³ / ₄	21 ¹ / ₂	62	18	22
7 ¹ / ₂ x10	15 ³ / ₄	10	1 ¹ / ₂	22	46	78 ³ / ₄	18	36	16	15	3	13 ³ / ₄	27 ¹ / ₂	78	23	26
7 ¹ / ₂ x12	15 ³ / ₄	12	1 ¹ / ₂	22	46	78 ³ / ₄	18	36	18	15	3	13 ³ / ₄	27 ¹ / ₂	78	23	28
9x10	18 ³ / ₈	10	2	27 ¹ / ₂	58	96 ³ / ₄	28	36	18	18	4	16 ³ / ₄	33 ³ / ₄	92	26	30
9x12	18 ³ / ₈	12	2	27 ¹ / ₂	58	96 ³ / ₄	28	36	20	18	4	16 ³ / ₄	33 ³ / ₄	92	26	32
9x16	18 ³ / ₈	16	2	27 ¹ / ₂	58	96 ³ / ₄	28	36	24	18	4	16 ³ / ₄	33 ³ / ₄	92	28	36
9x20	18 ³ / ₈	20	2	27 ¹ / ₂	58	96 ³ / ₄	28	36	28	18	4	16 ³ / ₄	33 ³ / ₄	92	30	40
9x24	18 ³ / ₈	24	2	27 ¹ / ₂	58	96 ³ / ₄	28	36	32	18	4	16 ³ / ₄	33 ³ / ₄	92	32	44
9x32	18 ³ / ₈	32	2	27 ¹ / ₂	58	96 ³ / ₄	28	36	40	18	4	16 ³ / ₄	33 ³ / ₄	92	36	52
12x16	24 ⁷ / ₁₆	16	2	34	64	108	29	36	24	24	4	20	40	115	34	42
12x24	24 ⁷ / ₁₆	24	2	34	64	108	29	36	32	24	4	20	40	115	38	50
12x32	24 ⁷ / ₁₆	32	2	34	64	108	29	36	40	24	4	20	40	115	42	58

All dimensions and specifications subject to change without notice.

* Some long conveyors require a double row of chain and two tail shafts.

Super Incline Capacity Chart

Model	Units	Chain Speed - Feet Per Minute			
		1 FPM	50 FPM	75 FPM	100 FPM
4 x 5	BPH	6.2	309	464	619
	CFH	7.7	387	580	773
5 x 7	BPH	10.8	538	807	1076
	CFH	13.5	673	1009	1345
6 x 9	BPH	16.5	827	1240	1654
	CFH	20.7	1034	1550	2067
7½ x 10	BPH	23.2	1162	1744	2325
	CFH	29.1	1453	2180	2906
7½ x 12	BPH	27.9	1395	2092	2790
	CFH	34.9	1744	2616	3488
9 x 10	BPH	27.8	1387	2081	2775
	CFH	34.7	1734	2602	3469
9 x 12	BPH	33.3	1665	2498	3330
	CFH	41.6	2081	3122	4162
9 x 16	BPH	44.4	2220	3330	4440
	CFH	55.5	2775	4162	5550
9 x 20	BPH	55.5	2775	4162	5550
	CFH	69.4	3469	5203	6938
9 x 24	BPH	66.6	3330	4995	6660
	CFH	83.2	4162	6244	8325
9 x 32	BPH	88.8	4440	6660	8880
	CFH	111.0	5550	8325	11100
12 x 16	BPH	58.8	2940	4410	5880
	CFH	73.5	3675	5512	7350
12 x 24	BPH	88.2	4410	6615	8820
	CFH	110.2	5512	8269	11025
12 x 32	BPH	117.6	5880	8820	11760
	CFH	147.0	7350	11025	14700

**Capacities based on free flowing granular product with standard inlet located in horizontal trough.*

Riley Equipment Manufactures A Complete Line of Bulk Material Handling Equipment . . .

- Bucket Elevators ■ Distributors ■ Screw Conveyors ■
- Incline Drag Conveyors ■ Super Incline Drag Conveyors ■
- Easy-Flo Drag Conveyors ■ Sur-Flo Drag Conveyors ■ Spouting & Accessories ■ Centrifugal & Continuous Industrial Bucket Elevators ■

For equipment designed to your specifications contact our Engineering Department.

Riley Equipment, Inc.
2205 S. Old Decker Road
P.O. Box 435
Vincennes, IN 47591-0435



Website: www.rileyequipment.com
E Mail: sales@rileyequipment.com
Phone: (812) 886-5500
Fax: (812) 886-5515